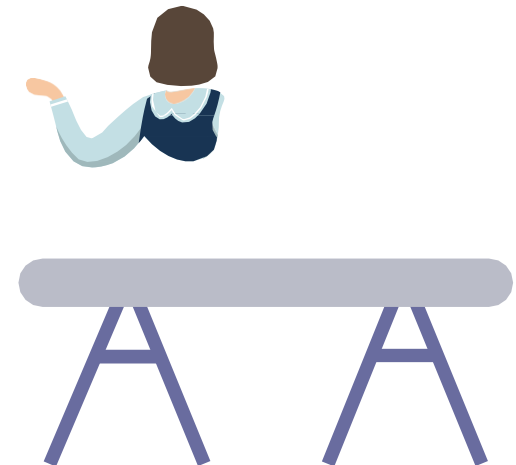


# Your exams and assessments 2025



# **Make sure you're prepared!**

**Don't get caught out – make sure you know:**

- Your timetable – be there on time
- Where your exam or assessment is being held
- What you can and can't take into each exam or assessment
- Where to put your mobile phone and smart devices
- That you have the right paper in front of you

If you are unsure about anything, ask your teacher, exams officer or invigilator

## Statement of Entry

- Emailed to you – save it somewhere
- Read it all carefully
- Note your exams in a diary or calendar
- Make sure you are clear on any **Access Arrangements** – do you know exactly what will happen in the exam?
- If you think you have a question about Access Arrangements please see the Academic Support team urgently.

# Candidate Number: 0245

Qualification	Paper	Description	Date	Start	End	Access Arrangements	Room	Seat
GCE A Level in Psychology	7182/1	PSYCHOLOGY ADV PAPER 1	19/05/23	09:00	11:00	No arrangements	SPORTS	P7
GCE A Level in Media Studies	A680U10-1	Media Studies Comp 1 Media Products	22/05/23	13:45	16:00	No arrangements	LRC	C14
GCE A Level in History	7042/1D	HISTORY ADV PAPER 1 OPTION D	24/05/23	09:00	11:30	No arrangements	SPORTS	E11

## Start Times

- Examinations begin at 9am or 1.45pm *unless otherwise stated*.
- **Arrive by 8.30am for a 9am exam and by 1.15pm for 1.45pm exam.**  
You must be ready to begin the exam at the scheduled start time.
- If you are going to be late – phone college.
- **If you arrive too late, you will not be allowed to take the exam.**
- Bring **PHOTOGRAPHIC ID** with you. If you do not do so this will delay the start of your exam until your identity can be confirmed.
- There will be lists outside the exam rooms as well. **Reception** can also look details up.

# Clashes

When two national exams happen at the same time

We have resolved the clash by putting one in the morning and one in the afternoon – it will say this on your Statement of Entry.

You must be supervised between exams.

You must bring lunch.

You can revise, but you can't use phones or access the internet.

# Parking on Site

- Parking on site remains limited
- You are allowed to park on the Tennis Courts on the day of an exam if you show your Statement of Entry at the Barrier between **8.30 - 8.45 or 1.25 – 1.30**



# Absence

If you are unable to attend your scheduled exam for any reason, **please call the College on 01223 631100 on the morning of your exam.**

If you think you may not be able to attend more than 1 exam, please call on the day of each exam you are unable to attend.

Exams **cannot** be rescheduled.



# Access Arrangements

- All Access Arrangements have been agreed and set up.
- Separate Invigilation and '**A room other than the main exam room**'
- An alternative room is usually LRC or smaller.
- Multiple access arrangements may be seated in the same room. There will be different end times.
- **Emergency arrangements:** e.g. broken hand, **phone college** as soon as possible. We may have to use Special Consideration if we can't add an Access Arrangement.

# Special Consideration

1.If you miss an exam for acceptable reasons (illness)

2.If you are present but disadvantaged

- Must be evidenced
- We apply to the exam board
- We don't know how they will apply any considerations

# Special Consideration

1.If you miss an exam through illness

- You must have medical evidence
- You must have completed some of the assessments in that subject
- You must have been taught the whole course

# Special Consideration

2. If you attend the exam but are disadvantaged

- You must have evidence
- You may get a small % uplift (2% or 3%)
- It must be an issue at the time of the exam
  - not historic

# Special Consideration

- Email this account and a panel will assess the evidence and circumstances
- We will pass this to the exam board if we think it fits the criteria in the guidance
- We will not give feedback or enter discussions

[specialconsideration@longroad.ac.uk](mailto:specialconsideration@longroad.ac.uk)

# Exam Equipment



No cases allowed



# Not allowed



No watches at all

There will be digital and  
analogue clocks

# Malpractice

- Having a phone in the exam
- Having other banned materials (notes)
- Trying to copy another candidate
- Disturbing the exam
- Buying or selling exam papers online
- Communicating with others when there is a clash



## Support and anxiety

- TEAMs page 'Need Support'
- [Ofqual exam pressure guide](#)
- College Wellbeing Support – Student Centre

# Results days

**Level 3 VTQs, AS and A levels: 14<sup>th</sup>  
August**

**Level 2 VTQs and GCSEs: 21<sup>st</sup> August**



# Results

- Results are emailed to your college email address
- We cannot give results out over the phone
- The website will have details of Post Results services
- Certificates are posted out in December

# Good luck!

