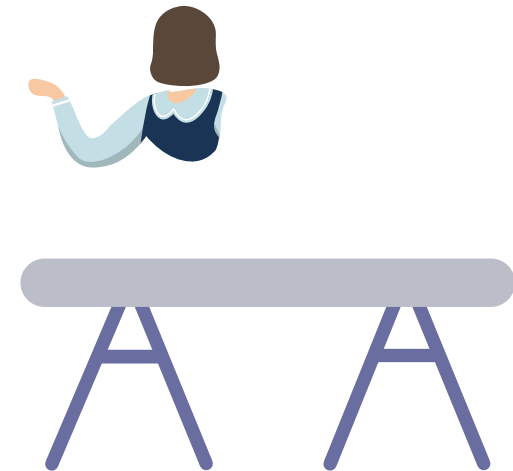
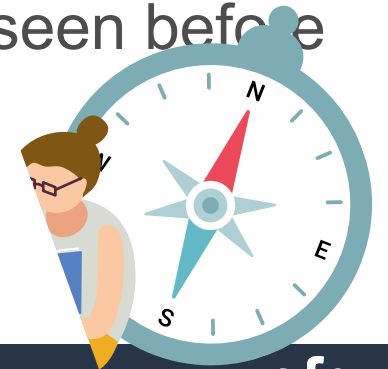


# Your exams and assessments 2023



# Your exams and assessments

- Exams and assessments will go ahead as planned – giving you the opportunity to show what you know and can do
- Everyone sits the same papers at the same time- the rules are the same for everyone
- Exam papers are anonymously marked and graded by independent experts
- There is support in place to recognise the disruption experienced - including grading protection so that, overall, results can be similar to those seen before the pandemic



# Make sure you're prepared!

Don't get caught out – make sure you know:

- Your timetable – be there on time
- Where your exam or assessment is being held
- What you can and can't take into each exam or assessment
- Where to put your mobile phone and smart devices
- That you have the right paper in front of you

If you are unsure about anything, ask your teacher, exams officer or invigilator

## Statement of Entry

- Emailed to you – save it somewhere
- Read it all carefully
- Note your exams in a diary or calendar
- If you think you are entitled to Access Arrangements (e.g. extra time, the use of a word processor etc.) not listed, please see the Academic Support team urgently.

# Candidate Number: 0245

Qualification	Paper	Description	Date	Start	End	Access Arrangements	Room	Seat
GCE A Level in Psychology	7182/1	PSYCHOLOGY ADV PAPER 1	19/05/23	09:00	11:00	No arrangements	SPORTS	P7
GCE A Level in Media Studies	A680U10-1	Media Studies Comp 1 Media Products	22/05/23	13:45	16:00	No arrangements	LRC	C14
GCE A Level in History	7042/1D	HISTORY ADV PAPER 1 OPTION D	24/05/23	09:00	11:30	No arrangements	SPORTS	E11

## Start Times

- Examinations begin at 9am or 1.45pm *unless otherwise stated*.
- **Arrive by 8.45am for a 9am exam and by 1.30pm for 1.45pm exam.**
- **If you arrive after 10am or 2.30pm, you will not be allowed to take the exam.** You must be ready to begin the exam at the scheduled start time.
- Bring **PHOTOGRAPHIC ID** with you (e.g. student ID card, passport, driving licence). If you do not do so this will delay the start of your exam until your identity can be confirmed.
- Bring a copy of the **Statement of Entry** with you.

# Parking on Site

- Parking on site remains limited
- You are allowed to park on the Tennis Courts on the day of an exam if you show your Statement of Entry at the Barrier between **8.30 - 8.45 or 1.25 – 1.30**



# Absence

If you are unable to attend your scheduled exam for any reason, **please call the College on 01223 631100 on the morning of your exam.**

If you think you may not be able to attend more than 1 exam, please call on the day of each exam you are unable to attend.

Exams cannot be rescheduled.

Special Consideration can be applied for, but you must have a genuine reason for absence – not transport related.



# Access Arrangements

- All Access Arrangements should now have been agreed and set up.
- Separate Invigilation and 'A room other than the main exam room'
- An alternative room is usually LRC or smaller.
- Multiple arrangements may be seated in the same room.
- Emergency arrangements: e.g. broken hand, phone college as soon as possible.

# Exam Equipment



No label



No cases allowed



Black pens

## Not allowed



No watches at all

There will be digital and  
analogue clocks

# Special consideration

If something goes wrong around the time of your exam or assessment that means you can't take it, or affects your performance...

- you may be able to ask for 'special consideration.' This is **only** for things that are unforeseeable and beyond your control.
- Special consideration could mean:
  - taking your exam in a different way
  - being given a small number of extra marks
  - Consideration of absence, as long as you've completed at least one other exam or assessments for that qualification
- Speak to Exams **as soon as possible** if you think this might apply to you. Evidence must be provided to the exam board.



# After your exams and assessments

- Exams are marked anonymously by expert examiners
- GCSE and A level grade boundaries will be set after all papers have been marked
- Grade boundaries vary year on year depending on the difficulty of the paper
- There is no quota of grades
- Grading will return to pre-pandemic standards, but with protection in place to allow for disruption experienced



# Contingency days

If (a big IF) a GCSE or A level exam must be moved nationally, the following dates will be used:

- 8 June – afternoon
  - 15 June – afternoon
  - 28 June – whole day
- 
- Although it is unlikely that an exam will be moved, you must make sure you are available. These dates cannot be used on an individual basis if you miss an exam.



# Results days

**Level 3 VTQs, AS and A levels: 17  
August**

**Level 2 VTQs and GCSEs: 24 August**



# More information?

**Search:**

**College website - Exams**

**[Ofqual student guide 2023](#)**

**[Ofqual exam pressure guide](#)**





# Good luck!

