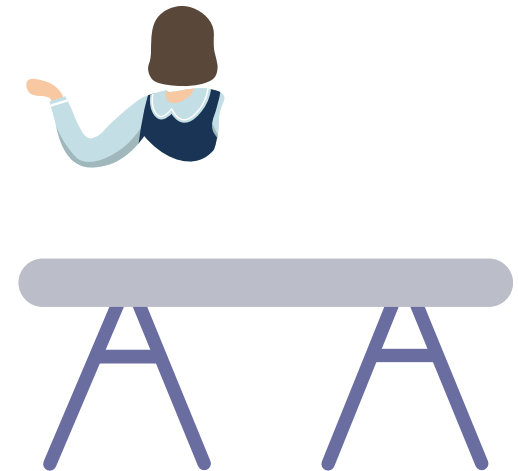


# Your exams and assessments 2024



# Make sure you're prepared!

Don't get caught out – make sure you know:

- Your timetable – be there on time
- Where your exam or assessment is being held
- What you can and can't take into each exam or assessment
- Where to put your mobile phone and smart devices
- That you have the right paper in front of you

If you are unsure about anything, ask your teacher, exams officer or invigilator

# Statement of Entry

- Emailed to you – save it somewhere
- Read it all carefully
- Note your exams in a diary or calendar
- Make sure you are clear on any **Access Arrangements** – do you know exactly what will happen in the exam?
- If you think you have a question about Access Arrangements (e.g. extra time, the use of a word processor etc.), please see the Academic Support team urgently.

# Candidate Number: 0245

Qualification	Paper	Description	Date	Start	End	Access Arrangements	Room	Seat
GCE A Level in Psychology	7182/1	PSYCHOLOGY ADV PAPER 1	19/05/23	09:00	11:00	No arrangements	SPORTS	P7
GCE A Level in Media Studies	A680U10-1	Media Studies Comp 1 Media Products	22/05/23	13:45	16:00	No arrangements	LRC	C14
GCE A Level in History	7042/1D	HISTORY ADV PAPER 1 OPTION D	24/05/23	09:00	11:30	No arrangements	SPORTS	E11

## Start Times

- Examinations begin at 9am or 1.45pm *unless otherwise stated*.
- **Arrive by 8.45am for a 9am exam and by 1.30pm for 1.45pm exam.**
- **If you arrive after 10am or 2.30pm, you will not be allowed to take the exam.** You must be ready to begin the exam at the scheduled start time.
- Bring **PHOTOGRAPHIC ID** with you (e.g. student ID card, passport, driving licence). If you do not do so this will delay the start of your exam until your identity can be confirmed.
- Bring a copy of the **Statement of Entry** with you. There will be lists outside the exam rooms as well. **Reception** can also look details up, but it takes time.

# Parking on Site

- Parking on site remains limited
- You are allowed to park on the Tennis Courts on the day of an exam if you show your Statement of Entry at the Barrier between **8.30 - 8.45** or **1.25 – 1.30**



# Absence

If you are unable to attend your scheduled exam for any reason, **please call the College on 01223 631100 on the morning of your exam.**

If you think you may not be able to attend more than 1 exam, please call on the day of each exam you are unable to attend.

Exams cannot be rescheduled.

Special Consideration can be applied for, but you must have a genuine reason for absence – not transport related.

# Access Arrangements

- All Access Arrangements should now have been agreed and set up.
- Separate Invigilation and '**A room other than the main exam room**'
- An alternative room is usually LRC or smaller.
- Multiple access arrangements may be seated in the same room. There will be different end times.
- Emergency arrangements: e.g. broken hand, **phone college** as soon as possible.



# Exam Equipment



No cases allowed



## Not allowed



No watches at all

There will be digital and  
analogue clocks

# Support

- TEAMs page 'Need Support'
- [Ofqual exam pressure guide](#)
- College Wellbeing Support – Student Centre

# Special consideration

If something goes wrong around the time of your exam or assessment that means you can't take it, or affects your performance...

- you may be able to ask for 'special consideration.' This is **only** for things that are unforeseeable and beyond your control.
- Special consideration could mean:
  - taking your exam in a different way
  - being given a small number of extra marks
  - Consideration of absence, as long as you've completed at least one other exam or assessments for that qualification
- Speak to Exams **as soon as possible** if you think this might apply to you. Evidence must be provided to the exam board.



# After your exams and assessments

- Exams are marked anonymously by expert examiners
- GCSE and A level grade boundaries will be set after all papers have been marked
- Grade boundaries vary year on year depending on the difficulty of the paper
- Results are emailed to your college account. Do not come into college.
- Post-Results services (reviews of marking) details on the website



# Results days

**Level 3 VTQs, AS and A levels: 15<sup>th</sup>  
August**

**Level 2 VTQs and GCSEs: 22<sup>nd</sup> August**



# More information?

**Search:  
College website**

**[Ofqual student guide 2024](#)**



# Good luck!

